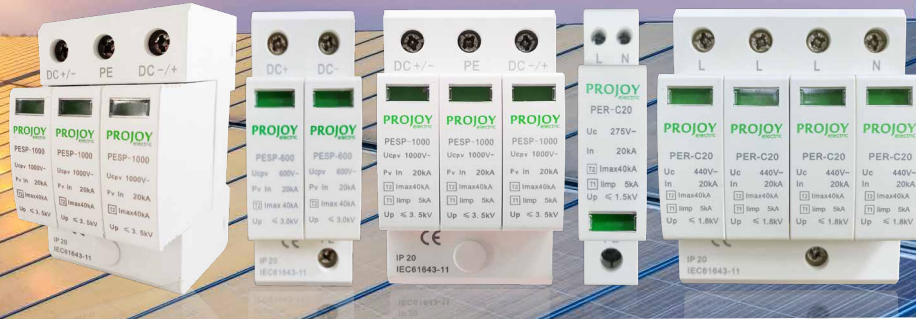


# PROJOY electric

– Switch To Safety! –

## PROJOY Surge Protector



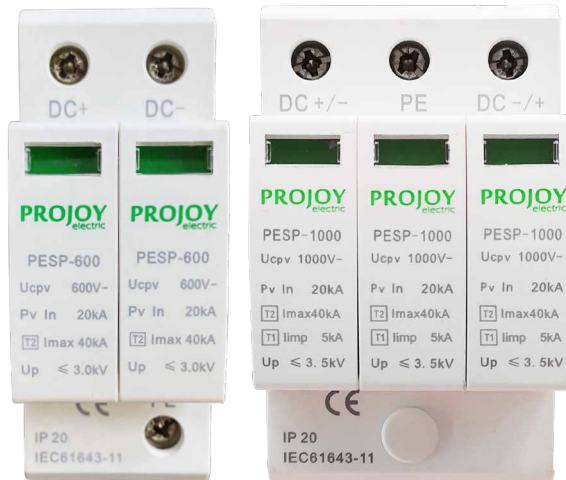
# PESP Series Photovoltaic DC surge protector (T2 type/T2+T2 type)

**PROJOY**  
electric

– *Switch To Safety!* –

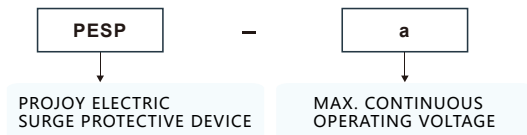
## Features

PESP is a special surge protector for Photovoltaic DC side. Widely used in photovoltaic power systems, such as a variety of junction boxes, inverters, AC-DC cabinets, DC screens and other important and vulnerable to lightning DC equipment. The Products integrated isolation and short circuit protection device, so that the protection module can be safe electrical isolation, prevent dc arc caused by fire hazards. The fault-proof Y-type circuit can prevent the damage caused by electrical insulation fault to the surge protector, and can replace the protection module safely, without arc-pulling phenomenon. Protect against indirect or direct lightning effects or other transient overvoltages.



- Type 2 Surge Protector for Photovoltaic
- I<sub>max</sub> : 40 kA
- No leakage, no operating currents
- EN 50539-11 compliance
- CE approved
- Remote signal (optional)

## Select Code



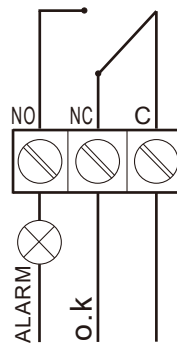
## Failure and disengagement device Alarm remote signaling device

### Failure and disengagement device

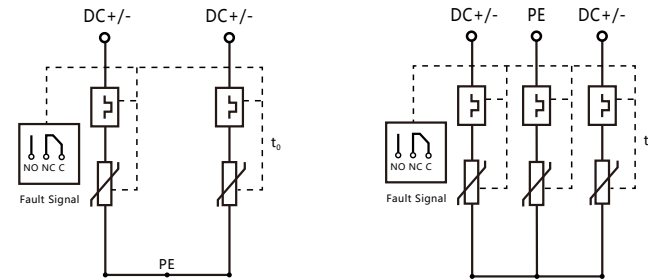
The surge protector is provided with a fail-safe device. When the protector breaks down due to overheating, the fail-safe detach device can automatically detach from the power grid and give an indication signal. When the protector is normal, the display window will show green, and after failure, the display window will show red.

### Alarm remote signaling device

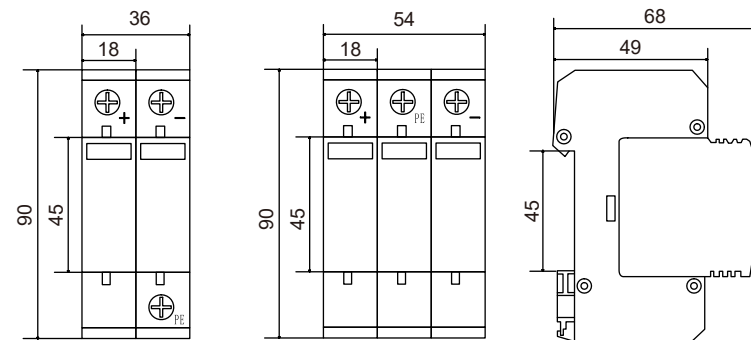
The protector can be made into a variety with remote signaling contacts. The remote signaling contacts have a set of normally open and normally closed contacts. When the protector is working normally, normally closed contacts are connected. If one or more modules of the protector fail, the contact will change from normally open to normally closed. Normally open contacts will work and send trouble information.



## Contact Configuration



## Dimensions



## Technical Data

Type	PESP-600		PESP-1000		PESP-1500	
SPD according	Type 2	Type 1+Type 2	Type 2	Type 1+Type 2	Type 2	Type 1+Type 2
Pole	2P		3P		3P	
Standards compliance	GB/T18802.1-2011 ( IEC61643-1:2005,MOD )					
Max. Continuous Operating Voltage Ucpv	600V DC		1000V DC		1500V DC	
Max. Discharge Current I <sub>max</sub>	40kA (8/20μs)					
Nominal Discharge Current I <sub>n</sub>	20kA (8/20μs)					
Impulse current by pole I <sub>imp</sub>	/	5kA (10/350μs)	/	5kA (10/350μs)	/	5kA (10/350μs)
Protection level Up	3.0 kV			3.5kV		
Responses Time t <sub>A</sub>	≤25ns					
Operating Temperature	-40°C~70°C					
Install Traverse Area	16~25 mm <sup>2</sup>					
Housing Material	PA6/PBT UL94 V-0					
Communication module	Built-in					
Protection Rating	IP20					
Dimensions	When the window displays red, the product is invalid and needs to be replaced.					
Installation dimensions	See outline and mounting dimensions					
Mounting	Symmetrical rail 35 mm					
Remote signalization connection	250VAC/0.1A 125VDC/0.2A 75VDC/0.5A					

# PER Series AC Surge Protection (T2type/T2+T2type)

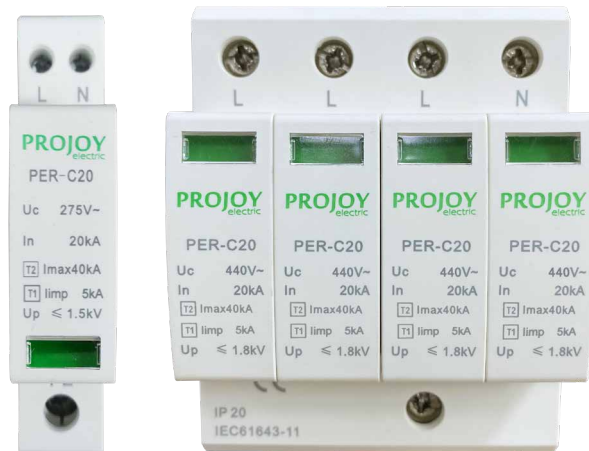
**PROJOY**  
electric

— Switch To Safety! —

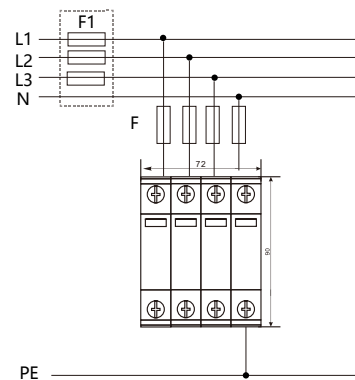
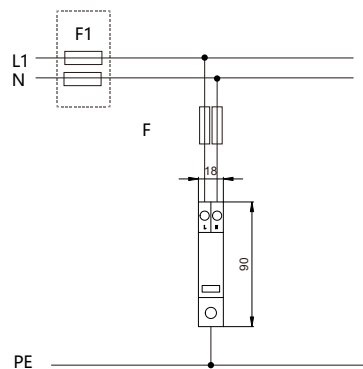
## Features

PER AC surge protector, suitable for AC 50/60 HZ, rated voltage 230/440V three-phase power distribution system, satisfy the SPD, I class and II class test. The peak shock current of the stage I protector is 5kA(10/350 $\mu$ s), and the charge is 25As,II protector maximum discharge current level can up to 100 kA. It can suppress direct strikes, inductive strikes or other instantaneous overvoltages, discharge inrush energy, thus protects system circuits and load equipment. It has the advantages of I or II protection, large discharge capacity, low residual pressure, no leakage current, integrated module structure, easy installation, high safety factor, long service life and so on.

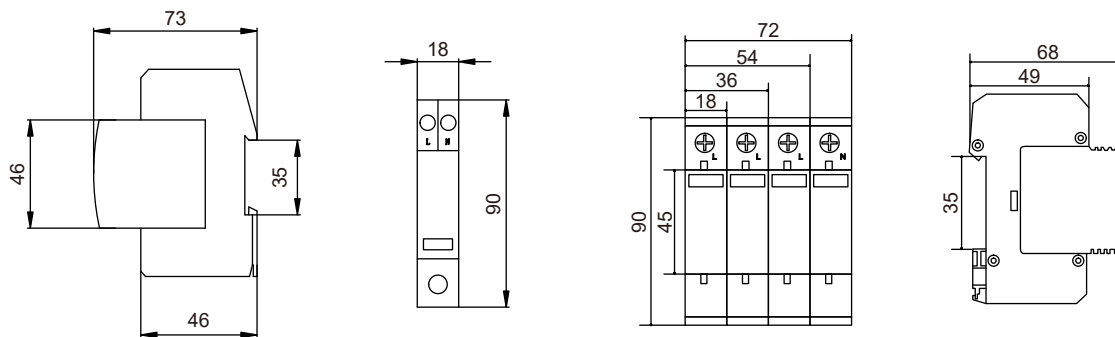
- PER AC surge protector cooperates with each other to realize the layered protection system, so that the low-voltage distribution system can be more widely and effectively protected.
- The surge protector is provided with a fail-safe device. When the protector breaks down due to overheating, the fail-safe detach device can automatically detach from the power grid and give an indication signal. When the protector is normal, the display window will show green, and after failure, the display window will show red.



## Contact Configuration



## Dimensions



## Technical Data

Type	PER-C20			
SPD according	Type 2	Type 1+Type 2	Type 2	Type 1+Type 2
Pole	1P		4P	
Standards compliance	GB/T18802.1-2011 ( IEC61643-1:2005,MOD )			
Max. Continuous Operating Voltage Ucpv	275V AC		440V AC	
Max. Discharge Current I <sub>max</sub>	40kA (8/20μs)			
Nominal Discharge Current I <sub>n</sub>	20kA (8/20μs)			
Impulse current by pole I <sub>imp</sub>	/	5kA (10/350μs)	/	5kA (10/350μs)
Protection level Up	1.5 kV		1.8kV	
Response Time t <sub>A</sub>	≤25ns			
Operating Temperature	-40°C ~ 70°C			
Install Traverse Area	16 ~ 25mm <sup>2</sup>			
Housing Material	PA6/PBT UL94 V-0			
Protection Rating	IP20			
Dimensions	When the window displays red, the product is invalid and needs to be replaced.			
Installation dimensions	See outline and mounting dimensions			
Mounting	Symmetrical rail 35 mm			



**PROJOY**  
electric

*— Switch To Safety! —*

**ProJoy Electric Co., Ltd.**

2nd Floor, Building 3, No. 2266, Taiyang Road, Xiangcheng District, Suzhou, China

Tel: +86 512 6878 6489 | Fax: +86 512 6878 6489

Email: [sales@projoy-electric.com](mailto:sales@projoy-electric.com) | [www.projoy-electric.com](http://www.projoy-electric.com)